

Hawke's Bay Heritage News

Newsletter of Historic Places Hawke's Bay Inc.

- June 2016 -

Hawke's Bay on Film 1913-1985

From homing pigeons on trawling boats, to classic 80s ads for sophisticated wines, and unique footage of the region both pre and post earthquake, Hawke's Bay on Film 1913 - 1985 captures what twentieth century life was like in the region, and how it changed.

Sunday 19 June | MTG Century Theatre | 2pm

General Admission \$15 | HPHB Members & MTG Friends \$10 | DOOR SALES ONLY

Enquiries: (06) 835 7781 or hb@historicplacesaotearoa.org.nz



mtg Hawke's Bay



Image Credit: Sunny Napier: The Brighton Of New Zealand, 1929, Nga Taonga Sound & Vision collection.

More from Portland Island

Those who visited the re-sited Portland Island Lighthouse during our trip to Wairoa in April might be interested to learn that there is also a piece of the lighthouse to be seen in Napier. One of the lenses from the lighthouse is on display at the Old Customhouse Museum in Ahuriri. The Museum is open on the first Sunday of each month during the winter and every Sunday over the summer. There is plenty to look at related to Ahuriri, the Port and surrounding areas and entry is free.

The Museum is also seeking expressions of interest from people wishing to become volunteers to help at the museum. Contact the museum by e-mail, customhouseahuriri@gmail.com or write to Private Bag 6006, Napier.



We would like to say a huge thank you to **East Pier** in Napier and **Spicers** in Havelock North. Both businesses allow us to meet on their premises every alternate month for our meetings.



EAST PIER HOTEL

SPICERS
specialist investment planning

HISTORIC
PLACES

HAWKE'S BAY

Friends of the Mokoepka Power Station

The Mokoepka Power Station on the Maraetotara Stream is one of our industrial heritage gems in Hawke's Bay and its heritage status is recognised by its inclusion on the Heritage New Zealand List as a Category 1 site. The power station was built by John Chambers of Maraetotara Station in 1892, with a later increase in capacity in 1926. The power station powered the Maraetotara homestead, the farm buildings and a neighbouring property. The power station continued to



The Power Station Building

provide winter heating for the homestead until recent years and is likely to resume this duty again from this winter making it one of the longest continuous serving hydro-electric power stations in New Zealand, if not the whole world!

In its more recent history the site was maintained by the Power Board but with the property passing to overseas ownership this link was lost. Some upkeep has been maintained by various

dedicated volunteers working on a strictly casual and unofficial basis. However, a stage has been reached where the some more formal and organised arrangement is needed to secure the future of this important heritage site. The site was threatened by a major subsidence of a section of river bank in 2012 which could have carried away part of the water race feeding the power station. This damage was eventually made good with extensive concrete work financed by the then NZ Historic Places Trust and the absentee owner. Maintenance of the site has had its ups and downs since then but the future upkeep is now being secured by the formation of a new group, "Friends of the Mokoepka Power Station". The Friends group, which is part of Historic Places Hawke's Bay, is committed to the organised upkeep of the

site which includes the power house, water race and the weir across the Maraetotara Stream. The Friends group is in the process of formalising access and other necessary arrangements with the owner. Recent work has included cleaning and sealing of the water race, trimming of overhanging trees, removal of fallen trees and branches, clearing drains around the power station building, bird-proofing and generally tidying of the surroundings. There are plans to repaint the building this year and to replace rotting woodwork. Work is also needed to maintain foot bridges and generally upgrade the access around the site which is rather precipitous in places.

General housekeeping of the site can be handled by working bees but the Friends will also need to secure some ongoing income and possible sponsorship to cover more costly projects as they arise. A first step will probably be to invite those interested to join the "Friends of the Mokoepka Power Station" through payment of an annual subscription. Apart from financial support, being a Friend, would probably make it easier to legitimately visit the site, which is on private property, a long way from the road, with no public access.

In the meantime we are keen to hear from anyone who is interested in joining the Friends of the Mokoepka Power Station and supporting the future security of this unique and outstanding heritage site.



More information about the history

Inside the building, featuring the late Lily Baker, a former life member of our society.

of the power station can be found on the Heritage New Zealand website : <http://www.heritage.org.nz/the-list/details/31>

Archaeology and Buildings — Dr Elizabeth Pishief

Archaeology is not just about early Maori sites; it also includes European sites that predate 1900. This means many places in New Zealand are archaeological sites and will require an assessment of the archaeological values prior to any work done on that site that may modify or destroy the site. For example, if somebody wants to demolish a building that was built before 1900, not only the site, but the building itself is part of the archaeological heritage of New Zealand. The building will need to be assessed as well as the potential sub-surface archaeological features. A point to remember is that this means all buildings, not just buildings that might be listed in a schedule on the local council's District Plan, or on Heritage New Zealand Pouhere Taonga's (HNZPT) List.

Depending on how important the building is the recommendation may be made that it should, if possible, be conserved on site, or if the land owners really want to continue with the proposed development then relocating the building and finding a suitable new use for it may be a better option than destroying it. If the building has low values then it may be demolished in which case a condition of the authority will include a requirement to have a buildings' archaeologist investigate the building according to one of the levels in HNZPT's guidelines (these can be found on their website).

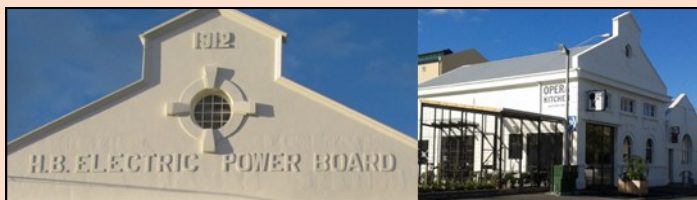


A pre-1900 house. Source: Elizabeth Pishief

Heritage Building Owners Praised for Adaptive Building Re Use

Historic Places Hawke's Bay promotes the preservation of all heritage buildings and environments across Hawke's Bay.

Recently the committee has given accolades to the owners of two businesses in Napier and Hastings who have refurbished "old" buildings to become areas of vitality within the cities.



The original façade has been kept in the recent refurbishment

The Napier Post Office and the Hastings Power Station Building have had a huge amount of resource poured into them to each emerge with a significant presence within their streetscapes and complying with the new earthquake standards.

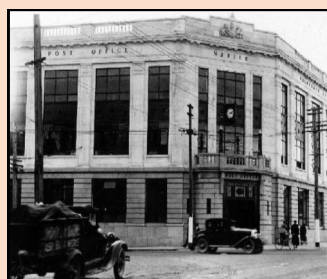
The Historic Places Committee is aware and sympathetic to the need for buildings to have an economic use and Gerald Grocott and Chris Hart owners of the Post Office and Wallace Development Company Ltd, owner of the Power Station Building are to be commended for their investment that allows our history to be used and celebrated.

The people of Hawke's Bay are respectful and knowledgeable about their history. The importance and preservation of many buildings that might have seen the wrecker's ball have been saved for future generations to enjoy alongside some significant modern architectural gems in our region due to some thoughtful owners.

Background:

Post Office - Completed in 1930 it was one of the few buildings to survive the earthquake but was gutted by fire. Originally owned by the Government, built as a 3 storey stonefaced (Oamaru Stone and Coromandel Granite) building.

Power Station Building - Originally built in 1912 by the Hastings Borough Council to house a diesel powered DC power station supplying Hastings and Havelock North. The power station was moth-balled in 1927 when the national grid eventually reached Hawke's Bay, this was initially from Mangahao and later from Waikaremoana. The power station was quickly brought back into service in 1931 on the day of the Hawke's Bay earthquake to maintain water and electricity supply. The power station was taken over by the Power Board in 1934 and it remained on standby serving during the power shortages of the Second World War and the immediate post war period. It was still on standby in 1961 and it is not known exactly when the plant was finally decommissioned.



The new Post Office

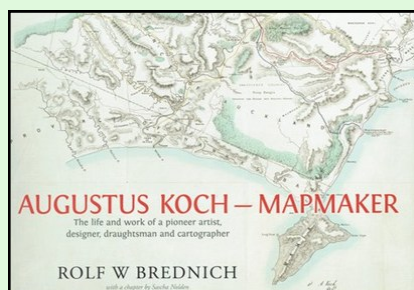


The building today

Book Review: *Augustus Koch- Mapmaker*

Rolph W Brednich, Steele Roberts Publishers, Wellington 2015.

Koch was born in Berlin in 1834 and trained as a draughtsman, lithographic printer and anatomist at the



Academy of Fine Arts and Berlin University. Following his involvement in the democratic revolution he was blacklisted by the Secret Police. He left his home country for England where he

pursued a new career as a seaman, eventually marrying and settling in New Zealand in 1855. He initially worked as a printer and designer in Auckland. During this time he met the renowned geologist Ferdinand Hochstetter and joined him on a trip to the North Island Interior as draughtsman and meteorological observer. In 1859 he joined the Department of Lands and Survey in Napier where he produced many fine maps together with

paintings and other illustrations. He moved on to Auckland in 1868 and then to the Public Works Department in Wellington in 1872 where he became known as one of the finest mapmakers in the colony also playing a prominent role in the cultural life of the capital.

This large and colourful book contains many of his fascinating detailed and artistic maps together with paintings, photographs and other illustrations including a number relating to Hawke's Bay which cover many interesting aspects of our local history.

After enjoying the book you might like to buy one of his maps, Map of the Province of Hawke's Bay 1874, which has been reproduced by the Hawke's Bay Knowledge Bank, printed on Picasso Gallery canvas. Two sizes are available, 795 X 640 at \$300 and 600 X 480 at \$150. These are available from the Knowledge Bank at Stoneycroft or through Trademe.

Wairoa Bus Trip - April 17th 2016.

After a few concerns that a early departure time might have been a deterrent, 38 members (plus one from Historic Places Wellington) left Napier at 7.30am and had a very comfortable journey in one of Nimon's newest coaches. We arrived in Wairoa at 10.00am, gathering at the Portland Island Lighthouse alongside the Wairoa Bridge where we met our tour guide Te Arohanui Cook and a couple from Historic Places Tairāwhiti (Gisborne). The lighthouse was dismantled and shipped to its present site in 1961, re-erected thanks mainly to the then Mayor Mr R.E Shortt and the Wairoa Jaycees Service Club. On the evening of the 9th April, a special event had been held at the Gaiety Theatre with a heritage film on NZ lighthouses and their keepers, and at 7.00pm the re lighting of the lighthouse took place after 20 years of inactivity.

We walked along the Marine Parade and looked at the various heritage buildings - Oslers 1905, The Commercial Bank of Australia 1911, which now houses the Wairoa Museum, Clyde Hotel 1913, Gaiety Theatre 1928, St Peters Church 1882, County Council Building 1902 and St. Andrews Church 1920. The group was greeted at the museum by Jill Grooby and Gail Menzies, viewing the impressive WW2 exhibit, a visual display of the "Moko" and learning about the town's history. All boarded the coach and we drove past where once stood Kai-mango Pa, a strongly fortified pa which held a commanding position at Spooners Point, continuing on our way to the Wairoa River bar. Te Arohanui spoke on the importance of Pilot Hill to sailing boats traversing the bar and ferrying their cargo up river to the Town. Retracing our way back to St. Andrews Church, we had lunch in the Church Lounge, where Gail from the Museum gave us a glimpse of Wairoa's past.

Our afternoon started with a Powhiri at Tamati A Maru Marae on Ruataniwha Road and next door viewed St.

Therese's Maori Catholic Church with its elaborately carved altar and tukutuku panels. The parish priest talked to a small group about Bishop Pompellier and Sister Aubert's connections with this area. Our last stop for the day was at



Ta Whiti A Maru Marae

Rowley and Lorraine Powdrell's homestead (HNZPT Listed) on SH 2 south of Wairoa. We looked at the first home built on site- a small whare now used for storage, then the current house built around 1874. This was extensively renovated by the current owners only for Cyclone Bola (1988) to cause major damage – the river flooded across the highway and into the house and garden. After Walter Powdrell's death the property was subdivided amongst the family and this homestead sits in 6ha of land.



The Powdrell Homestead

We wish to acknowledge the support of our society members on this bus

tour and specially our gratitude to Te Arohanui Cook (who travelled back to her hometown to talk to us), Gail Menzies and Jill Grooby from the Wairoa Museum, Glenys Single from St Andrews Parish, Lillian Adsett, St. Therese's Church and lastly Rowley and Lorraine Powdrell.

AGM

Our AGM will be held at Te Aute College on Sunday August 28th. Members will have driven past many times, now is your opportunity to take a closer look. More details will be released closer to the date. In the meantime members might like to give some thought as to how to get there. Would you prefer to drive there, or for us to provide a bus?

AGM of Historic Places Aotearoa

We will be hosting the AGM of our umbrella organisation, Historic Places Aotearoa over the weekend of 29-30th October in Napier where we will be joined by the six other Historic Places member organisations. Apart from the AGM on Saturday the programme will include visits to local heritage sites, a dinner, guest speakers and possibly other activities. A full programme will be released later and local members will be welcome to participate in all or any of the planned activities.

COMMITTEE MEMBERS

Historic Places Hawkes Bay Inc , Postal Address: 2 Arthur Close, Clive 4102

www.historicplacesaotearoa.org.nz

e-mail hb@historicplacesaotearoa.org.nz

Barbara Arnott (Chair)	Napier	835 5950	Susan Lopdell	Taradale	844 6697
Denis Pilkington (Deputy Chair)	Napier	835 6525	Rose Mohi	Havelock North	877 9474
Philip Irwin (Secretary)	Clive	870 0513	Evelyn Pishief-Shipp	Napier	021 183 5053
Maxine Anderson	Taradale	844 4875	Emma Keong	Havelock North	027 697 4010
Beverly Fullerton-Smith	Hastings	870 6393	Cr Rod Heaps	Hastings District Council	875 1123
Elizabeth Pishief	Napier	835 4044	Cr Annette Brosnan	Napier City Council	027 337 9303
Mike King	Napier	842 0221	Cr Sally Butler	CHB District Council	06 856 5840